

Recombinant Human CCL15 / MIP-5 / NCC3 (aa 46-113)

Catalog Number: 10898-H08E1



Sino Biological Inc.
Biological Solution Specialist

General Information

Gene Name Synonym:

HCC-2, HMRP-2B, LKN-1, LKN1, MIP-1D, MIP-5, MRP-2B, NCC-3, NCC3, SCYA15, SCYL3, SY15

Protein Construction:

A DNA sequence encoding the amino acids (Ser 46 –Ile 113) of human CCL15 (Q16663-1) was expressed, with a polyhistidine tag at the C-terminus.

Source: Human

Expression Host: E.coli

QC Testing

Purity: > 90 % as determined by SDS-PAGE.

Endotoxin:

Please contact us for more information.

Stability:

Samples are stable for up to twelve months from date of receipt at -70 °C

Predicted N terminal: Met

Molecular Mass:

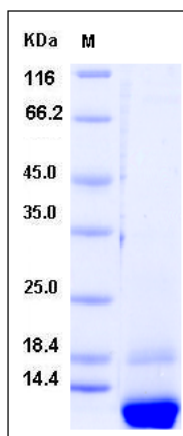
The recombinant human CCL15 (aa 46-113) consists of 79 amino acids and has a calculated molecular mass of 8.9 kDa. It migrates as an approximately 10 kDa band in SDS-PAGE under reducing conditions.

Formulation:

Lyophilized from 0.2µm filtered solution of PBS, pH7.4

Normally 5 % - 8 % trehalose and mannitol are added as protectants before lyophilization. Specific concentrations are included in the hardcopy of COA. Please contact us for any concerns or special requirements.

SDS-PAGE:



Usage Guide

Storage:

Store it under sterile conditions at -70°C upon receiving. Recommend to aliquot the protein into smaller quantities for optimal storage.

Avoid repeated freeze-thaw cycles.

Reconstitution:

Detailed reconstitution instructions are sent along with the products.

Protein Description

C-C motif chemokine 15, also known as Chemokine CC-2, Leukotactin-1, MIP-1 delta, Macrophage inflammatory protein 5, MIP-5, Small-inducible cytokine A15, NCC-3, MIP5 and CCL15, is a secreted protein which belongs to the intercrine beta (chemokine CC) family. CCL15 / MIP5 is most abundant in heart, skeletal muscle and adrenal gland. Lower levels of CCL15 / MIP5 are in placenta, liver, pancreas and bone marrow. CCL15 (22-92), CCL15 (25-92) and CCL15 (29-92) are found in high levels in synovial fluids from rheumatoid patients. CCL15 / MIP5 is a human CC chemokine that activates the receptors, CCR1 and CCR3. Unlike other chemokines, it contains an unusually long N-terminal domain of 31 amino acids preceding the first cysteine residue and a third disulfide bond. CCL15 / MIP5 is a chemotactic factor that attracts T-cells and monocytes, but not neutrophils, eosinophils, or B-cells. CCL15 / MIP5 functions as an essential factor in the migration of monocytes, lymphocytes, and neutrophils. CCL15 / MIP5 acts mainly via CC chemokine receptor CCR1. CCL15 / MIP5 also binds to CCR3, CCL15 (22-92), CCL15 (25-92) and CCL15 (29-92).

References

1. Youn BS. et al., 1998, Blood. 91: 3118-26.
2. Escher SE. et al., 2004, J Pept Res. 63 (1): 36-47.
3. Berahovich RD. et al., 2005, J Immunol. 174: 7341-51.
4. Lee JS. et al., 2010, Mol Biol Rep. 37 (5): 2149-56

Manufactured By Sino Biological Inc., FOR RESEARCH USE ONLY. NOT FOR USE IN HUMANS.

Fax :+86-10-51029969 • Tel:+86-400-890-9989 • <http://www.sinobiological.com>