

Catalog Number: 10797-R248-F

General Information	
<b>Immunogen:</b>	Recombinant Human CD48 / SLAMF2 protein (Catalog#10797-H08H)
<b>Reagents:</b>	FITC-conjugated rabbit monoclonal antibody
<b>Specificity:</b>	Human CD48 / SLAMF2
<b>Clone ID:</b>	248
<b>Ig Type:</b>	Rabbit IgG
<b>Applications:</b>	Flow Cytometry, WB
<b>Concentration:</b>	5 µl/Test, 0.1 mg/ml
<b>Formulation:</b>	Aqueous solution containing 0.5% BSA and 0.1% sodium azide
<b>Storage:</b>	2 °C - 8 °C in the dark

## Preparation

This antibody was obtained from a rabbit immunized with purified, recombinant Human CD48 / SLAMF2 (rh CD48 / SLAMF2; Catalog#10797-H08H; NP\_001769.2; Met 1-Ser 220) and conjugated with FITC under optimum conditions, the unreacted FITC was removed.

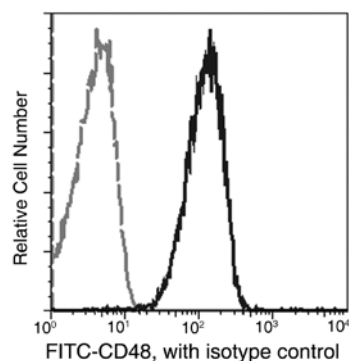
## Storage

This antibody is stable for 12 months from date of receipt when stored at 2°C - 8°C. Protected from prolonged exposure to light. **Do not freeze !**

Sodium azide is toxic to cells and should be disposed of properly. Flush with large volumes of water during disposal

## Applications

**Flow Cytometry** – Flow cytometric analysis of anti-CD48 reactivity.



**Profile of anti-CD48 reactivity on human peripheral blood lymphocytes analyzed by flow cytometry.**

*Flow cytometry was performed on a BD FACSCalibur flow cytometry system.*

Please refer to [www.sinobiological.com/Flow-Cytometry-FACS-Protocols-a-750.html](http://www.sinobiological.com/Flow-Cytometry-FACS-Protocols-a-750.html) for technical protocols.

**Western blot** – This antibody can be used at 1-2 µg/mL with the appropriate secondary reagents to detect Human CD48 in WB.

## Specificity

Human CD48 / SLAMF2

**No cross-reactivity** in ELISA with

Mouse CD48

Human TNFRSF4

## Background

CD48, also known as SLAMF2, BCM-1 and BLAST-1, is a 65 kDa GPI-linked protein belonging to the CD2 subfamily of immunoglobulin superfamily molecules. In rodents, CD48 is the ligand for CD2 whereas in humans, CD58 is the ligand for CD2. Human CD48 cDNA encodes a 243 aa precursor that includes a 26 aa signal sequence, a 194 aa mature protein that contains one Ig-like V-type domain and one Ig-like C2-type domain, and a 23 aa C-terminal propeptide. It has a high degree of sequence homology to CD58 (LFA-3), and human CD48 shares approximately 50% aa sequence identity with mouse and rat CD48. CD48 is expressed on most lineage-committed hematopoietic cells but not on hematopoietic stem cells or multipotent hematopoietic progenitors. CD48 performs biological functions in a variety of processes including adhesion, pathogen recognition, cellular activation, and cytokine regulation, and emerges as a critical effector molecule in immune responses.

## Reference

1. Wong, Y.W. et al., 1990, J. Exp. Med. 171: 2115-2130.
2. Ianelli, C.J. et al., 1997, J Immunol. 159 (8): 3910-3920.
3. Ianelli, C.J. et al., 1998, J. Biol. Chem. 273: 23367-23375.
4. Loertscher, R. et al., 2002, Transpl. Immunol. 9: 93-96.
5. Assarsson, E. et al., 2005, J. Immunol. 175: 2045-2049.
6. Bhat, R. et al., 2006, J. Leukocyte Biol. 79: 417-424.